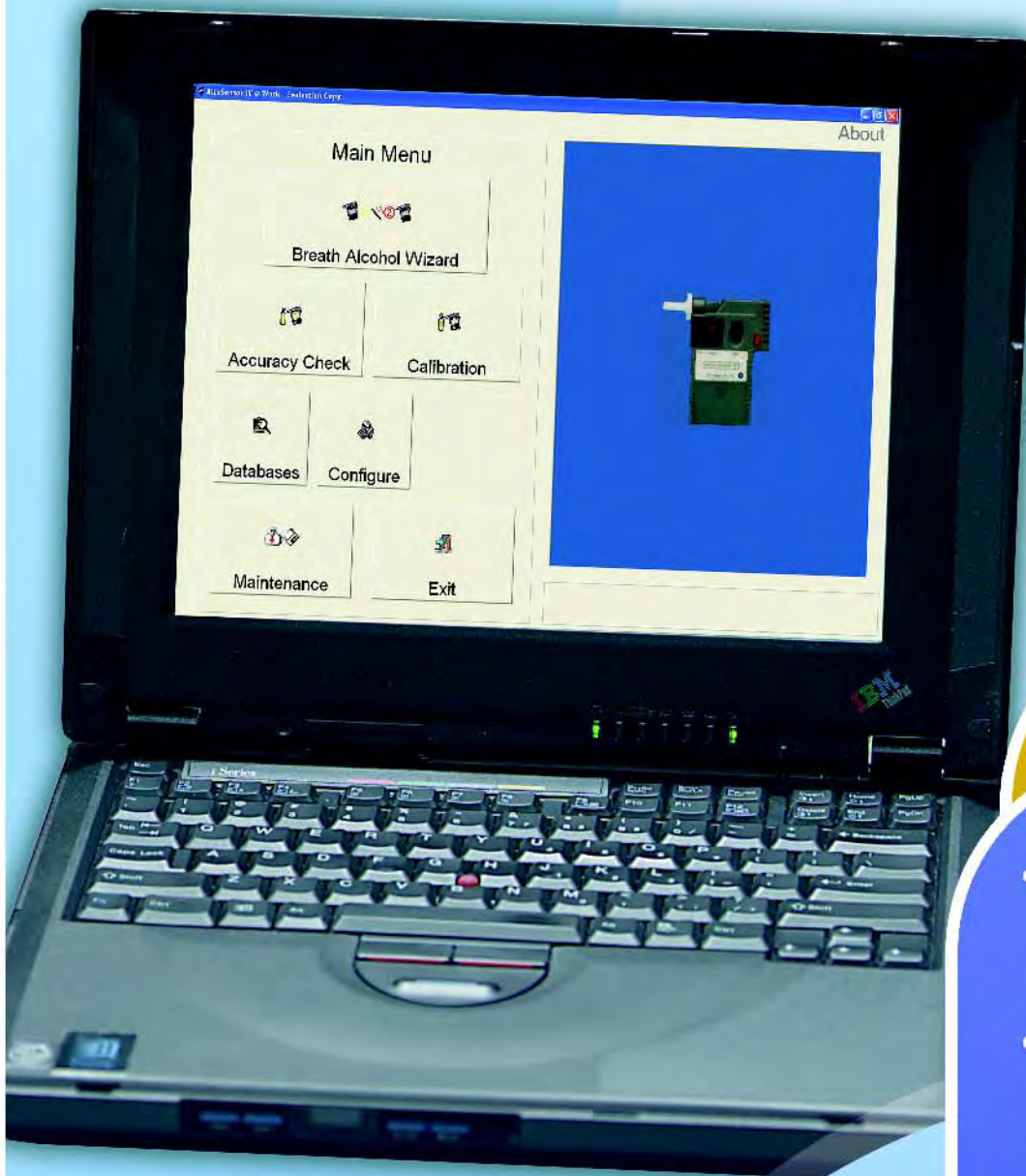


## Alco-Sensor IV @ Work Software



Alcohol Wizard



Calibration

### ALCOHOL TESTING INSTRUMENTS

- Designed for Dept. of Transportation Workplace Testing
- Graphical instructions guide operator through test procedure
- Creates database of test results, BATs, and employers
- Prints on labels or directly on Alcohol Test Form



1-800-227-9890

[www.alcopro.com](http://www.alcopro.com)

# Alco-Sensor IV @ Work Software

## Designed for Department of Transportation Workplace Testing

The Alco-Sensor IV @ Work software connects an Alco-Sensor IV to a computer to perform DOT alcohol testing. The @ Work software enables an agency that can use existing computers and printers to minimize their investment in creating a DOT compliant alcohol testing system. The @ Work software interacts with the Alco-Sensor IV to display and print test results as required by DOT procedures.

## Graphical Instructions Guide Operator

The @ Work software displays a combination of animated and detailed written instructions to guide the operator through every step of the DOT alcohol test procedure. This feature makes the software ideal for BATs who perform alcohol tests infrequently. The software requires an operator response at each step of the protocol, ensuring that even the least experienced BAT will perform the test correctly.

## Manage Database of Test Results, BATs, and Employers

The @ Work software creates databases that minimize repetitive typing and facilitate data entry. For example, the operator can point and click to select the employer, instantly populating the form with the employer's address, phone number, etc. A report function enables the creation of professional looking reports pulled from the database of test results.

## Prints Directly on Alcohol Test Form

The Alco-Sensor IV @ Work software supports several printers. Using a dot-matrix page printer the software can print all of Step 1 and Step 3 information as well as the test results directly onto the Alcohol Test Form. The only handwriting necessary is the operator's signature, producing a neat and legible documentation of the test procedure. When used with a label printer the operator attaches self-adhesive labels for Step 1 and Step 3 information and for test results.



## SPECIFICATIONS

Software Format: download or CD

Compatible instrument: Alco-Sensor IV (blue dot)

Minimum Computer Configuration: Windows 2000, XP; 512 MB RAM; 100 MB hard disk space; available serial port (or substitute approved USB to serial adapter); available printer port.

Supported printers: Dymo Label Printer, Okidata 321 Turbo, Okidata ML 590, Okidata ML 420

## RELATED PRODUCTS

Item	Description	Price
	206 Alco-Sensor IV (blue dot)	\$825.00
	324-04 Alcohol Gas Tank	\$165.00
	328 Regulator	\$109.00

## @Work Software

Item	Description	Price
345	Alco-Sensor IV @ Work Software <i>Includes software on CD, Alco-Sensor IV connecting cable, 100 DOT Alcohol Test Forms, 100 Non-DOT Alcohol Test Forms.</i>	\$567.00

For Information & Orders Call: **1-800-227-9890**  
 Order 24 Hours A Day At: **www.alcopro.com**  
 Fax Orders To: **1-800-655-5834**

**ALCO PRO**  
 DRUG AND ALCOHOL TESTING PRODUCTS