

Accuracy Check: Alco-Sensor IV

Using a .038 Alcohol Gas Tank and 1.5 liter-per-minute regulator.



Step 1: Attach Regulator

Follow instructions on the Alcohol Gas Tank to attach the regulator.



Step 2: Purge Regulator by pressing button/valve on regulator for approx. 8-10 seconds before running your first accuracy check of the day.



Step 3: Determine Gas Value by reviewing the elevation chart on the tank to calculate the alcohol concentration for the 0.038 tank at your elevation. The value can also be determined more easily by utilizing a True-Cal device.



Step 4: Start Accuracy Check Procedure

Turn the instrument on by securely inserting a disposable mouthpiece into the Alco-Sensor IV instrument.



Step 5: Observe automatic Air Blank

Once the mouthpiece is inserted, the instrument will display the temperature, then will flash "<" and ">", and "Wait". Next, the display will flash "Blank" while the instrument performs an Air Blank (you should hear a CLICK). If the instrument is free of alcohol, it should read "0.00" for a few seconds. The display will then flash "Test".

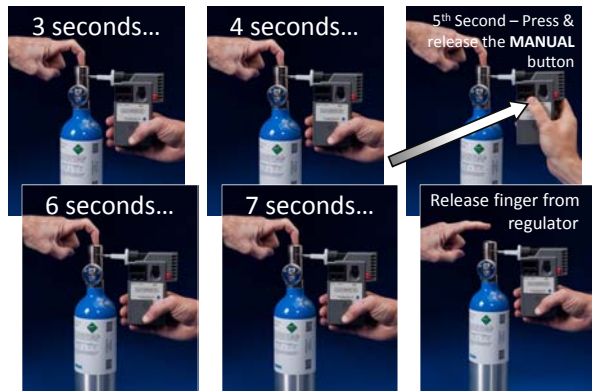


Step 6: Attach Alco-Sensor IV to regulator

Securely attach the instrument via the mouthpiece to the tube on the tank regulator.

**Step 7: Start Gas Flow**

Press the regulator button for 7 seconds. On the 5th second, press the **MANUAL** button to take the gas sample.

**Step 7 cont'd: Start Gas Flow****Additional Note on Gas Flow**

NOTE 1: Gas must be flowing through the mouthpiece during the entire 7-second process, therefore continue pressing the tank regulator button for another 2 seconds **AFTER** you press & release the **MANUAL** button during the 5th second.

Step 8: Observe Reading

Observe & Record the 3-digit reading. Now press the **SET** button.

You can recall the reading with the **RECALL** button at any time before ejecting the mouthpiece.

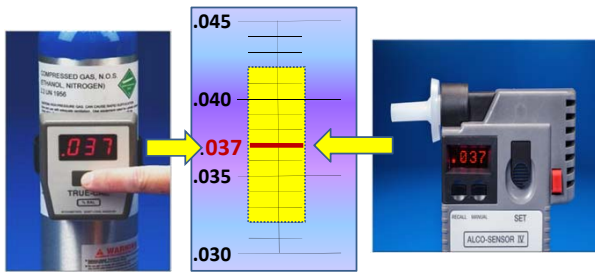
Step 9: Interpret Results

Results within +/- .005 of the elevation-adjusted value of the Alcohol Gas Tank are acceptable.

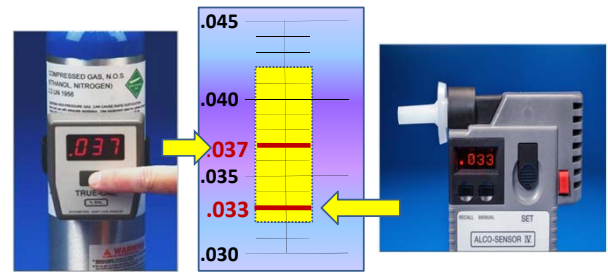
The Alco-Sensor IV is reading accurately.

(see next 3 slides for acceptable readings)

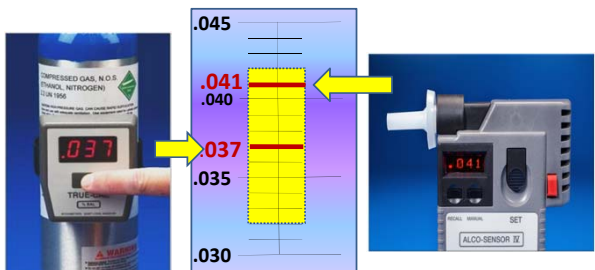
Acceptable Tolerance



Acceptable Tolerance



Acceptable Tolerance



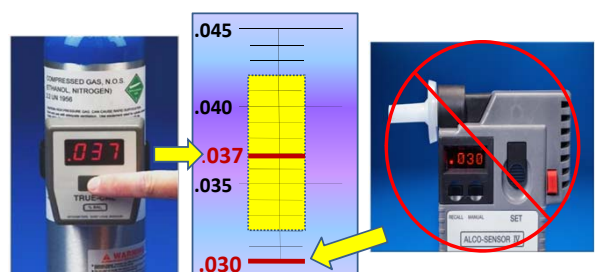
Step 9 cont'd: Interpret Results

Results that are **NOT** within +/- .005 of the elevation-adjusted value are out of acceptable tolerance.

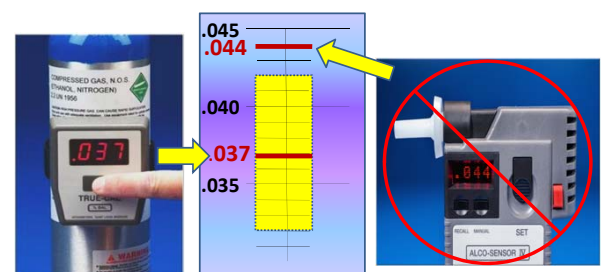
The Operator must perform a Calibration Adjustment.

(see next 2 slides for unacceptable readings)

NOT Acceptable !!



NOT Acceptable !!



Step 10: Record Results

Record every Accuracy Check result in a Calibration Log to document the accuracy of the Alco-Sensor.

For technical assistance and to order calibration supplies:

AlcoPro, Inc.

800 227-9890

www.alcopro.com